

# 0.1-4 GHz Low Noise Amplifier

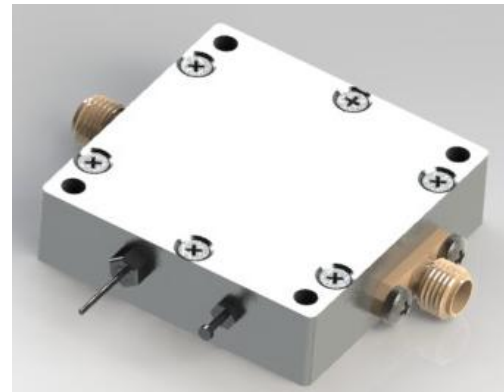
## SCMAM00001SS20-DM (Rev.01)

### Features

- ◆ 0.1 to 4 GHz frequency range
- ◆ SMA input/output interface
- ◆ Output P1dB 18 dBm min.
- ◆ Noise figure 3 dB max

### Application

- ◆ Test instrumentation
- ◆ General RF system



### RF Specifications

Test conditions unless otherwise noted: VDD = +5 V, Temp. = +25 °C, 50 Ω system

Parameter	Conditions	Min	Typ	Max	Units
Operational Frequency Range		50		4000	MHz
Test Frequency			1900		MHz
Gain		19	20.6	22	dB
Input Return Loss			16		dB
Output Return Loss			17		dB
Output P1dB			+20		dBm
Output IP3	Pout = +3 dBm/tone, Δf = 1 MHz	+32.5	+36		dBm
Noise Figure			1.8		dB
Current, IDD			85	100	mA

### Mechanical

#### Dimensions

40L × 40W × 12H mm

Dimensions in mm

