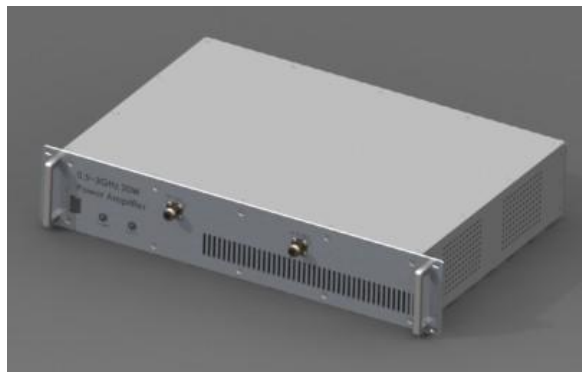


500~3000MHz 20W RF Power Amplifier SCMAM00002NN1D-RM (Rev.01)

Features

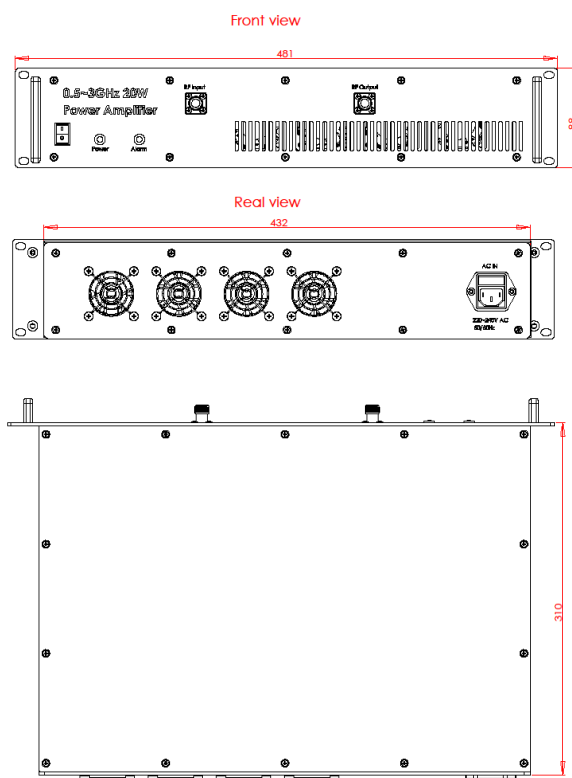
- ◆ Frequency range 500MHz to 3000MHz
- ◆ Gain > 47dB
- ◆ Output P1dB 20W min
- ◆ Low Power Consumption
- ◆ 2U rack mount
- ◆ Over temperature protection



Specifications

Frequency Range:	500MHz~3000MHz
Gain	47 dB
Output P1dB	43dBm(20W) min
Spurious	60 dBc max
Gain Flatness over frequency	±2.5 dB maximum
Input VSWR	2:1 max
Output VSWR	2:1 max
Maximum RF input power	+10dBm
Operating Temperature	0°C ~+50°C
Input voltage	AC 90~240V, 50/60Hz
Power consumption	250W max
Cooling	Forced air cooling
Input/output connectors	N-type female
Dimensions	(W)432mm × (H)88 × (D)310 mm
Weight	9.5 Kg max

Mechanical Drawings



Dimensions in mm