

10~40GHz Power Splitter/Combiner

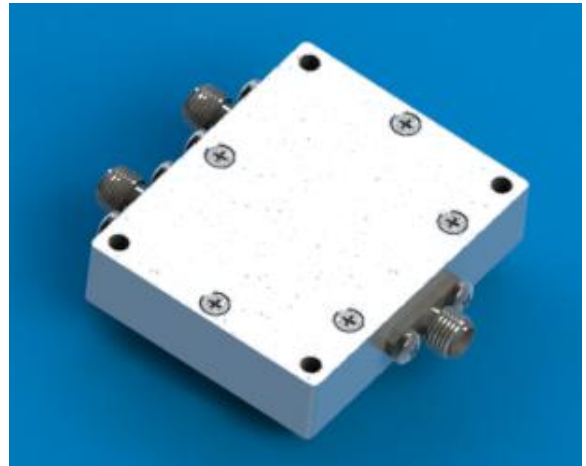
SCMPS11001KK02-DM (Rev.01)

Features

- ◆ 10GHz to 40GHz frequency range
- ◆ 2.92 mm SMK input/output interface
- ◆ Good isolation, 15 dB typ.
- ◆ Good input/output VSWR, 1.4 typ.
- ◆ Maximum input power 2W

Application

- ◆ Test instrumentation
- ◆ General RF system



RF Specifications

Frequency range.....	10 to 40 GHz
Insertion loss (above theoretical 3 dB)	3 dB max @ 18 GHz 6.5 dB max @ 40GHz
Maximum input power.....	2 W
Isolation.....	15 dB (typical)
Amplitude unbalance.....	0.5 dB max @ 18 GHz 1 dB max @ 40GHz
Phase unbalance.....	5° typical @ 18GHz 9° typical @ 40GHz
VSWR.....	2 max @ 40 GHz

Mechanical

Dimensions
50L x 40W x 11.5H mm

