

# SP4T Pin Diode Switch

## SCMSW04001SS0D-DM (Rev.01)

### Features

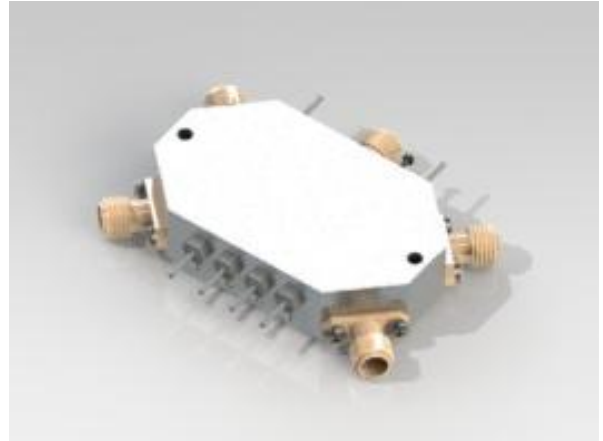
- ◆ 4 to 5.5GHz frequency range
- ◆ 20dB isolation
- ◆ 20W input power

### Application

- ◆ General RF system

### RF Specifications

Type	Reflective
Frequency	4 to 5.5GHz
Insertion loss	0.6dB max
Isolation	10 dB min
VSWR	1.5:1 max
Switching speed	2usec max
Impedance	50ohm
Input power	20W max (CW)
DC power supply	-12V@150mA, 5V@300mA max
RF connectors	SMA female
Control	TTL (4 pins)



### Mechanical

Dimensions  
50L x 30W x 11H mm

