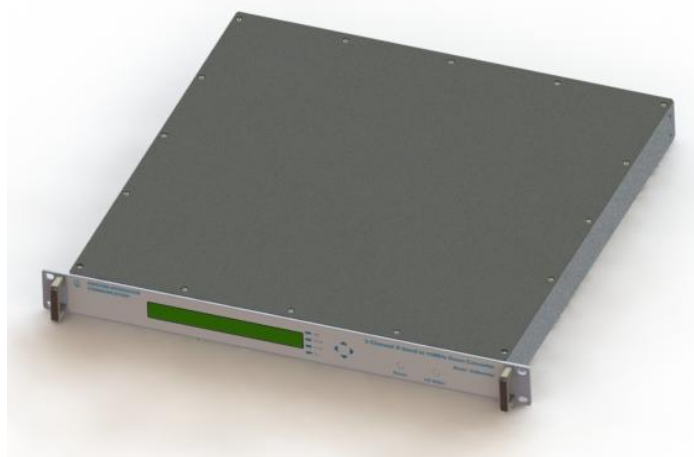


# 2W Indoor L to Ku Up Converter SCMUC28002SS12-RM (Rev.01)

## Features

- ◆ Switchable 12.8/13.05GHz LOs
- ◆ 2W output power
- ◆ 20dB gain control range in 0.5 dB step size
- ◆ Monitoring & Controlling Via RS232 Interface
- ◆ Monitoring & Controlling Via Ethernet
- ◆ Unit in standard 19" Rack Mountable 1U chassis



## RF Specifications

### Input Characteristics

Frequency	950-1450MHz for Std. Ku output 950-1700MHz for Ext. Ku output
Impedance	50 $\Omega$
VSWR	1.5:1 maximum
L-band Input Connector	SMA female

### Output Characteristics

Frequency	14-14.5GHz for Std. Ku 13.75-14.5GHz for Ext. Ku
Impedance	50 $\Omega$
VSWR	1.5:1 maximum
Output power (P1dB)	2W (33 dBm)
Receive band noise	-170dBm/Hz
Output connector	SMA female

### Channel Characteristics

Frequency Sense	Non-inverting
Image Rejection	60 dB minimum
Conversion Gain	60 dB nominal
Gain flatness over frequency	
Over full band	$\pm 1.5$ dB
Over 36 MHz	$\pm 0.75$ dB
Gain Stability over Temperature	$\pm 2$ dB maximum



# 2W Indoor L to Ku Up Converter SCMUC28002SS12-RM (Rev.01)

Inter Modulation (Two tones at combined output power of 30dBm)	-27dBc
Noise figure	15 dB (at minimum gain attenuation)
Spurious	
In-band signal related	<-60 dBc
In-band Signal independent	<-37 dBm
Out of band	<-37 dBm

## LO Characteristics

LO Frequency	12.8/13.05 GHz switchable
Phase Noise	
Frequency Offset	Phase noise
1 KHz	-80 dBc/Hz
10 KHz	-90 dBc/Hz
100 KHz	-95 dBc/Hz

## 10MHz Reference

---

Internal 10MHz reference stability	+/-10 ppb over operation temperature
Internal/External reference	Auto Selection
External Reference Level	-5 to +5 dBm
External Reference in connector	BNC female

## Monitoring and Controlling

---

Interface	
Local	Front panel LCD display, Key pad control
Remote	RS232, Ethernet Optional
Gain Control	20dB range in 1dB step size
Power	Front panel green LED
LO Alarm	Front panel red LED

## Power Supply

---

Operating voltage	100~240 VAC, 47 ~ 53Hz
Power consumption	60w Typical



# 2W Indoor L to Ku Up Converter SCMUC28002SS12-RM (Rev.01)

## Environmental Conditions

---

Operating temperature	5°C to +45°C
Relative Humidity	Up to 95%

## Mechanical

---

Dimensions	19" Rack Mountable 1U; Depth: 430mm Max.
Weight	4.5kg Typ.
Color	Light Grey

